

2028 PHOTOGRAPHY MASTERCLASS



Nov



Nanuk Polar Bear Lodge



Nature & Travel Photography Masterclass with National Geographic's Jad Davenport

Churchill Wild is proud to introduce its first-ever Nature & Travel Photography Masterclass, led by National Geographic photographer and filmmaker Jad Davenport. Designed for both passionate beginners (you can shoot with your phone) and seasoned professionals, this immersive Arctic safari combines extraordinary wildlife encounters with expert instruction in photography, storytelling, and visual craft.

The Masterclass is set during the dramatic autumn freeze-up along the Kaska Coast, the most visually powerful season in the North. Sparring polar bears gather along the shoreline awaiting sea ice, wolf packs hunt moose along the newly frozen rivers, snowy owls patrol the coastal meadows for lemmings, and violent storms make for epic landscape photography sessions.

Your daily safaris are curated around optimal light conditions and wildlife activity. We prioritize sunrise and sunset safaris broken up by midday learning sessions. Depending on conditions, we hope to offer a rare night safari to practice light-painting and astrophotography.

Daily classroom modules focus on the essential pillars of professional nature and travel photography. You'll learn how to set your camera up for bird photography, how to create compelling landscape compositions, how to design a personal workflow and how to develop a post-production editing style. Jad also shares real-world insight into the business of photography, with discussions on winning assignments, understanding contracts, copyright and model releases, and how to build a sustainable career.

ITINERARY

DAY 1 - GET SETTLED, GEARED UP AND MEET YOUR TEAM

Arrive in Winnipeg where you will enjoy a relaxing stay at our choice hotel, The Grand by Lakeview at the Winnipeg Airport. You will meet the rest of your group at an orientation dinner hosted by a Churchill Wild representative.

DAY 2 - WELCOME TO NANUK POLAR BEAR LODGE!

Fly to Churchill, where you will be met by our staff, and then on to Nanuk Lodge. Upon arrival, your hosts will provide a tour of the Lodge and get you settled into your room. A thorough orientation on travelling in polar bear country will be provided. Then it's time to prepare your photo and video gear and start shooting. Time permitting, we'll head out for a shakedown safari. After the excitement of the day prepare for the first of many fine meals from the award-winning 'Blueberries & Polar Bears' cookbooks.

DAYS 3 TO 8 - NATURE & TRAVEL PHOTOGRAPHY MASTERCLASS

This heart of the expedition dives deep into the art and craft of image-making—both in the field and back at the lodge. Rather than focusing only on gear, we explore what truly makes a photograph compelling: light, color, composition, perspective, and the elusive “moment.” From golden hour and blue hour to harsh midday sun and night skies, guests learn to read light and use it intentionally.

Our pre-dawn departures place us in the field when wildlife is most active and the light is peak. As the light flattens, we return to the lodge for classroom presentations including how to set your camera for optimum focus modes, understanding ISO and aperture, and using shutter speed as an artistic choice. We dive into animal behavior, learn about anticipating moments and discuss the ethics of field work and AI in post-production.

During quieter wildlife moments, our attention turns to landscape and travel photography. Guests learn how studying master painters helps us create “a journey for the eye” in our compositions, and how lens and aperture selection change perspectives. We'll prepare our cameras for night photography, learning tricks on making northern lights pop and capturing the magic of the Milky Way.

As the program progresses, we shift from single images to shooting stories. Guests learn how professionals plan assignments, build shot lists, capture essential narrative elements, and edit cohesive visual stories. We also introduce the fundamentals of video—covering core shot types, important audio principles, time-lapse techniques, and practical editing workflows—showing how motion can complement still photography.

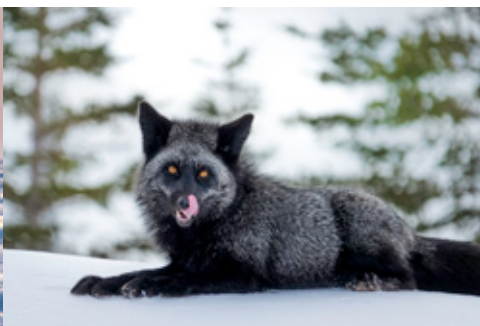
The program concludes by focusing on crafting your career. We discuss contests, copyright, contracts, releases, markets, and social media strategy, along with real-world scenarios photographers may face. Through portfolio discussions and reflection, guests leave with clarity, confidence, and clear next steps—ready to turn strong images into meaningful opportunities.

DAY 9 - BACK TO WINNIPEG

After breakfast it's time to say goodbye to the Lodge and the wildlife whose home you've shared over the last 8 days.

DAY 10 - HOMEWARD BOUND

After a restful sleep you will pack your bags in preparation for your flight home.





ACCOMMODATIONS: One of the original National Geographic Unique Lodges of the World, Nanuk Polar Bear Lodge sits at the crossroads of three cultures—the European explorers and traders, the coastal Inuit and the forest-dwelling Swampy Cree. Each have left their mark on the landscape from century-old stone tent rings to the 1957 ruins of York Factory, a national historic site 40 km west of the lodge. It was once the epicenter of the Canadian fur trade.

Designed and crafted in parkitecture style, the one-storey wood-beamed lodge is a north-facing chevron that sits snugly between the boreal forest and the Arctic tundra and Hudson Bay beaches. At its heart is a central Great Room, dining area, bar, boutique and office. Panoramic windows face Hudson Bay and offer fantastic wildlife viewing.

GUIDES AND EQUIPMENT: Expedition is fully guided with all related transportation and safety equipment provided.

CLOTHING: Temperatures will range from -10 to -30C, likely with high wind chills. Blowing snow and/or blizzard conditions can be experienced at any time. High-end insulated boots, pants, and parka will be provided for the expedition.

*We are unable to accommodate boots larger than a men's size 13. We have limited gear available for guests over 6'4."

ADDITIONAL NOTES: Wildlife encounters are not guaranteed.

OUR ADVENTURE INCLUDES: All air and ground transfers between Winnipeg and our lodge, winter pants, boots and parka, accommodations, guide services and excursions, and meals as outlined in the itinerary.

- Day 1: Dinner
- Day 2 to 9: Breakfast, Lunch, Dinner
- Day 10: None

2028 RATE: \$28,135 CAD per person plus tax (based on double occupancy)

Prices are subject to taxes of 8.5%.

Single guests can sign up to share a room with another person of the same gender at the regular rate per person based on double occupancy.