

2027 CLOUD WOLVES OF THE KASKA COAST



July



Nanuk Polar Bear Lodge



JOIN THE WOLF PACK AND PUPS this July on our newest summer expedition—an opportunity to participate in our wolf citizen-science field study as you help search for wolf dens and rendezvous sites with the hope of spending time observing the wolf pack caring for their three-month-old pups.

WHETHER YOU ARE A WOLF LOVER dreaming of seeing them in the wild, a photographer chasing National Geographic-worthy images, or a naturalist craving field experience, our newest ten-day CLOUD WOLVES EXPEDITION will take you on an unforgettable.

Our base is Nanuk Polar Bear Lodge, located on the remote Kaska Coast, an uninhabited wilderness more than 50 times larger than Yellowstone National Park. This wilderness is home to resident packs of cloud wolves 'Canis lupus nubilus', which often roam along the coast.

July is an exciting time to search for wolves. If the breeding pair has produced a litter we may have a chance to observe and document the small pups as they begin exploring their world.

While the focus of this expedition is on wolves, we could also encounter polar bears, black bears, moose, caribou, wolverine, red fox and a host of migrating birds from sandhill cranes to bald eagles.

The expedition is led by wolf expert and 'National Geographic' photographer Jad Davenport. Along with our naturalist guides you'll have the chance to participate in hands-on wolf research - setting up and checking trail cameras, conducting wildlife surveys, locating and documenting kill sites and hopefully observing and recording wolf pack behaviour.

ITINERARY

DAY 1 - GET SETTLED, GEARED UP AND MEET YOUR TEAM

Arrive in Winnipeg where you will enjoy a relaxing stay at our choice hotel, The Grand by Lakeview at the Winnipeg Airport. You will meet the rest of your group at an orientation dinner hosted by a Churchill Wild representative.

DAY 2 - WELCOME TO NANUK POLAR BEAR LODGE!

Fly to Churchill, where you will be met by our staff, and then on to Nanuk Lodge.

Upon arrival, your hosts will provide a tour of the Lodge and get you settled into your room. A thorough orientation on travelling in polar bear country will be provided. Then it's time to assemble your photo and video gear, hard drives, and tripods and start shooting. Time permitting, we'll head out for a shakedown hike.

After the excitement of the day prepare for the first of many fine meals from the award-winning 'Blueberries & Polar Bears' cookbooks.

DAYS 3 TO 8 - FIND THE WOLVES!

Enjoy a hearty breakfast while our guides brief us on our plan of attack for the day. After breakfast, it's time to head on safari!

These daily safaris are a chance for us to find the wolf packs and get you as close as possible to observe and photograph their behaviour and social interactions.

Wolves regularly travel to hunt and mark their territory; they can easily cover 80km a day. With our small group size and high-guide ratio, we are able move quickly along a network of established safari trails.

After morning safaris, we'll head back to the lodge to enjoy a light lunch. After lunch, we'll head back into the field. Some days, depending on wildlife and weather, we may opt for an all-day safari and extend our range.

For those interested in becoming involved with our citizen-science wolf study, the safaris are also a chance to conduct field work. Depending on the weather and wildlife situation, we may have opportunities to collect trailcam images, cast animal tracks, study social relationships, map territories, conduct and record howl surveys. Participants contributions can become part of the yearly study.

Evenings at Nanuk are a chance to unwind and enjoy a nightly happy hour with a short presentation on wolf biology and natural history, storytelling and wildlife photography, followed by a delicious dinner and socializing around the fire.

The Kaska Coast boasts over 300 nights a year of Auroral activity, making it one of the best places in the world to see the dazzling Northern Lights. If the sky is clear and the solar winds are active, we'll be sure and wake you up for a dazzling show.

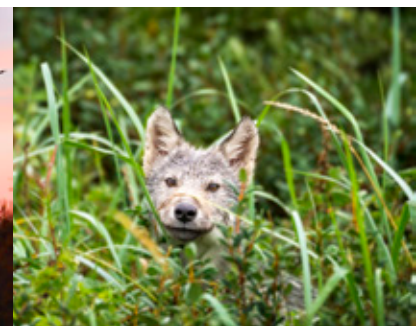
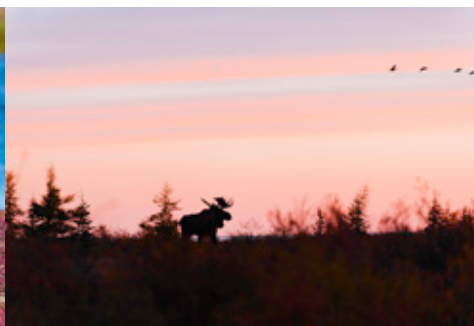
This is your expedition. While we want to offer you as many experiences as possible, we also encourage you to relax. Take an afternoon or morning off (or a couple) and have the lodge to yourself. We'll stoke the fire, pour you some coffee and leave you with some tasty brownies. Some of our best wildlife viewing happens right from the lodge. You never know who might wander up to the window and look in on you.

DAY 9 - BACK TO WINNIPEG

After breakfast it's time to say goodbye to the Lodge and the wildlife whose home you've shared over the last 8 days.

DAY 10 - HOMEWARD BOUND

After a restful sleep you will pack your bags in preparation for your flight home.





ACCOMMODATIONS: One of the original National Geographic Unique Lodges of the World, Nanuk Polar Bear Lodge sits at the crossroads of three cultures—the European explorers and traders, the coastal Inuit and the forest-dwelling Swampy Cree. Each have left their mark on the landscape from century-old stone tent rings to the 1957 ruins of York Factory, a national historic site 40 km west of the lodge. It was once the epicenter of the Canadian fur trade.

Designed and crafted in parkitecture style, the one-storey wood-beamed lodge is a north-facing chevron that sits snugly between the boreal forest and the Arctic tundra and Hudson Bay beaches. At its heart is a central Great Room, dining area, bar, boutique and office. The Great Room features a roaring river-rock fireplace, lots of deep leather couches and chairs, spotting scopes, bookshelves and maps, and a collection of Arctic artifacts. Panoramic windows face the Hudson Bay and offer fantastic (and comfortable) wildlife viewing.

Two spacious wooden decks (also excellent for wildlife viewing) lead off either side of the Great Room, connecting it to the two guest wings with four private rooms and en suites each. The hallways are wide and feature more panoramic windows for excellent wildlife viewing.

Because this is prime wolf and polar bear country, and both are curious about the sights, sounds and smells emanating from here, the lodge is surrounded by a tall, see-through fence. Guests are welcome to roam within this inverse zoo on their own—the wooden decks and a three-storey observation tower make for excellent wildlife and Northern Light viewing and photography.

GUIDES AND EQUIPMENT: Expedition is fully guided with all related transportation and safety equipment provided.

CLOTHING: Arctic summer on the Hudson Bay coast is absolutely green, flowery and beautiful. When our season begins in July, you can expect average daytime temperatures around 15°C (59°F). That said, weather in the North can be unpredictable, and conditions may vary from sunny and warm to cool and rainy—sometimes all in one day. Because our expeditions involve long hours outside, guests are required to bring headnets or bug shirts. We can provide rain gear and rubber boots, which are available in a wide range of sizes—from child to adult. Please note that we are unable to accommodate boot sizes larger than men's size 13.

ADDITIONAL PHOTO OPS: While our focus is on wolves, we hope to encounter other wildlife including polar bears, black bears, wolverines, fox, moose and ptarmigan. Aurora Borealis viewings are some of the best in the world here, so be prepared for a few sleepless nights! Many viewing and photo ops take place near the lodge so guests are always welcome to enjoy some relaxing 'at-lodge' time.

ADDITIONAL NOTES: While your guides make every effort to find and track animals, wildlife encounters—including wolves and wolf pups—are not guaranteed. Due to the customized nature of this safari, please allow for flexibility in daily activities. To ensure the highest level of personal service, this expedition is limited to only 16 guests.

YOUR ADVENTURE INCLUDES: All air and ground transfers between Winnipeg and our lodge, accommodations, professional guide services and excursions, and gourmet meals, as follows:

- Day 1: Dinner
- Day 2 to 9: Breakfast, Lunch, Dinner
- Day 10: None

2027 RATE: \$26,795 CAD per person plus tax (based on double occupancy)

Prices are subject to taxes of 8.5%.

Single guests can sign up to share a room with another person of the same gender at the regular rate per person based on double occupancy.