



CHURCHILL WILD

Arctic Safari Guide



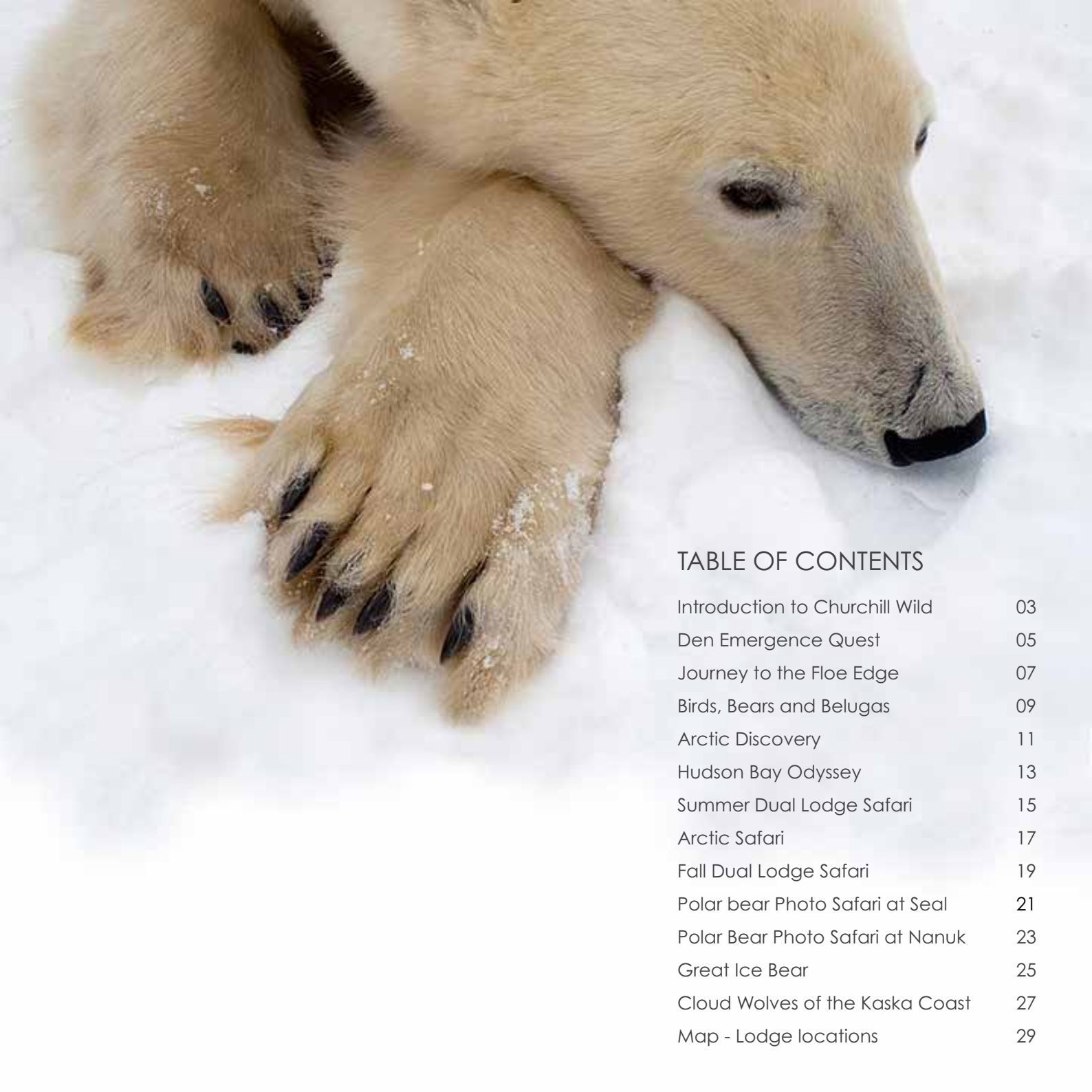


TABLE OF CONTENTS

Introduction to Churchill Wild	03
Den Emergence Quest	05
Journey to the Floe Edge	07
Birds, Bears and Belugas	09
Arctic Discovery	11
Hudson Bay Odyssey	13
Summer Dual Lodge Safari	15
Arctic Safari	17
Fall Dual Lodge Safari	19
Polar bear Photo Safari at Seal	21
Polar Bear Photo Safari at Nanuk	23
Great Ice Bear	25
Cloud Wolves of the Kaska Coast	27
Map - Lodge locations	29

THE WILDEST PLACE ON EARTH

If you've ever dreamt of flying over the spectacular Arctic tundra to a remote lodge, walking the Hudson Bay coastline in small groups to view polar bears, and returning to your lodge to unwind by a fireplace before dining on delicious fare...Churchill Wild is your dream come true.

Here, among the wilds of northern Manitoba you'll find diversity of wildlife, the brilliance of the northern lights, and stunning vistas.

Each of the safaris in our portfolio is designed to delight your senses and take you on a profound and unforgettable journey into the Arctic wilderness.





HERE'S WHAT TRULY SETS CHURCHILL WILD APART:

Canada's Most Exclusive Polar Bear Ecolodges

- Churchill Wild is the only company on the planet specializing in ground level walking tours through the polar bear inhabited remote regions of Arctic Canada. We provide access that presents wildlife enthusiasts and photographers with the opportunity of a lifetime amid these stars of the Arctic.
- We offer exclusive access to unique polar bear viewing experiences in both summer & the traditional fall season. We have a 99% success rate in polar bear sightings by land and sea.
- Churchill Wild is family owned and operated, evident in the care we put into every detail of your experience. With over 100 years of Arctic travel experience in the family, no one knows the Hudson Bay coast and surrounding regions like we do.
- Beyond incredible polar bears we have exclusive areas for other wildlife viewing including beluga whales, wolves, moose, black bears, Arctic fox and more.
- Churchill Wild's culinary experience is second to none, featuring a menu of tundra-inspired cuisine pulled from the pages of the best-selling cookbook series *Blueberries & Polar Bears*, penned by our matriarch, Helen Webber, and her best friend Marie Woolsey.



DEN EMERGENCE QUEST

Nanuk Polar Bear Lodge



DEN EMERGENCE QUEST

The goal of this expedition is to find and observe female polar bears and their newborn cubs in the area of Cape Tatnum on Manitoba's Hudson Bay coast. This experience is undoubtedly the most rugged of our adventures and not for the faint of heart or weak of knee as the physical participation level is very high.

This coastline has the highest concentration of moose in the province and a very strong "attending" wolf population. Foxes, wolverine and pine marten also frequent the coast and might be seen. Aurora borealis sightings are some of the best in the world here, so be prepared for a few sleepless nights!

Other activities may include igloo building, wolf howls, soapstone carving and snowshoeing expeditions.

Package includes return airfare from Winnipeg to Thompson or Churchill and Nanuk Polar Bear Lodge, eleven nights at the lodge and two nights in Winnipeg. All meals, excursions, and guide services while in Churchill and at the Lodge. *Winter gear is included.

*The winter gear we provide is designed to fit guests from child to adult. Boot sizes larger than a men's size 13 or a very small child are customized sizes that we do not provide. Additionally, guests over 6'4" may be required to bring their own gear as we may not have clothing sizes to fit.



February - March



Length: 14 days, 13 nights



Price: \$16,995 CAD pp + tax



JOURNEY TO THE FLOE EDGE

Seal River Heritage Lodge



JOURNEY TO THE FLOE EDGE

This rugged, small-group expedition will engage and challenge all your senses as you explore the floe edge where land fast ice meets the open waters of Hudson Bay. Witness the evolution of the sea ice as the tide ebbs and flows, shifting and breaking down towering ridges.

The Arctic is a destination that conjures up images of long sunny days, icy landscapes, and endless sunsets. It's a place so untamed, so boundless, and so alluring that your inner explorer can't help but be awakened. Hop in a sea kayak and glide through the frigid waters, navigating around ice floes and ridges. Take a fat-tire bike for a ride along the floe edge or settle into a dogsled for an authentic Arctic experience.

As you stand at the threshold of open water, you may even experience the visual phenomenon known as a Fata morgana. This very rare type of mirage occurs when light rays bend when passing through the space where cool ocean water meets the warmer air above.

Limited to 12 intrepid guests this package includes return airfare from Winnipeg to Churchill and Seal River Heritage Lodge, seven nights at the lodge and two nights in Winnipeg. All meals, excursions, and guide services while in Churchill and at the Lodge.

*The winter gear we provide is designed to fit guests from child to adult. Boot sizes larger than a men's size 13 or a very small child are customized sizes that we do not provide. Additionally, guests over 6'4" may be required to bring their own gear as we may not have clothing sizes to fit.

 April - May

 Length: 10 days, 9 nights

 Price: \$16,495 CAD pp + tax



BIRDS, BEARS & BELUGAS

Seal River Heritage Lodge



BIRDS, BEARS & BELUGAS

Birds, Bears & Belugas has become recognized as the most diverse wildlife viewing program in Canada. Your adventure takes place at our exclusive fly-in ecolodge, Seal River Heritage Lodge in the heart of Arctic summer.

With a backdrop of tundra alive with flora and fauna, this summertime adventure combines the thrill of seeing and hearing beluga whales and the adrenaline rush of ground-level polar bear viewing. Migratory and shorebirds peppering the sky and coastline provide a serene reminder that you cannot get any closer to nature than this.

A short boat ride from the Lodge brings you to the Seal River Estuary where beluga whales calve each summer. This, coupled with polar bears and the wide range of other wildlife in the area, make the 8-day Birds, Bears & Belugas Adventure one of the most adventure-rich experiences offered anywhere in the world.

Package includes return airfare from Winnipeg to Churchill and Seal River Heritage Lodge, five nights at the lodge and two nights in Winnipeg. All meals, excursions, and guide services while in Churchill and at the Lodge.



July - August



Length: 8 days, 7 nights



Price: \$14,195 CAD pp + tax



ARCTIC DISCOVERY
Nanuk Polar Bear Lodge



ARCTIC DISCOVERY

Arctic Discovery is your immersion into one of the planet's last untamed wilderness areas. Our Nanuk Polar Bear Lodge boasts unrivaled access to polar bears and their coastal habitat. This area's diverse and abundant wildlife combined with untouched terrain make Arctic Discovery one of our most loved trips.

Your safari experience starts in Winnipeg where you'll be introduced to the regions that you'll soon explore at the Manitoba Museum's artfully curated Arctic Gallery.

Churchill is the location of your first wildlife encounter! Here, you'll have your first encounter with one of the many uniquely adapted mammals of the Arctic ecosystem, the beluga whale. Family pods will regard you curiously, and sing and chatter, while you float among them in your kayak at the mouth of the Churchill River.

You'll be transported to Nanuk Polar Bear Lodge deep in the heart of polar bear country. While at Nanuk, you'll enjoy coastal exploration to the tidal flats and Hudson Bay shoreline using a combination of people power (walking!) and our specially outfitted all-terrain vehicles. This safari will leave you with a deep appreciation for this stunning region, rich with history, wildlife, and breathtaking scenery.

Package includes return airfare from Winnipeg to Churchill and Nanuk Polar Bear Lodge, two nights in Winnipeg, two nights in Churchill, and four nights at the lodge. All meals, excursions, and guide services while in Churchill and at the Lodge.



July - August



Length: 9 days, 8 nights



Price: \$14,195 CAD pp + tax



HUDSON BAY ODYSSEY

Nanuk Polar Bear Lodge



HUDSON BAY ODYSSEY

This exclusive adventure will take place on the coast of Hudson Bay, within the Kaskatamagan Wildlife Management Area at Nanuk Polar Bear Lodge. This property is situated in an ultra-remote location, near observed denning sites.

A two-hour plane journey north of Winnipeg takes you to an area so remote it hasn't changed in thousands of years. During your breathtaking flight you will fly over the Northern Taiga Forest and follow the mighty Nelson River to the plains and tidal flats of Hudson Bay where beluga whales make their summer home.

You will also pass over York Factory, a trading post that was permanently established in 1684 by Governor George Geyer of the Hudson's Bay Company. This was the beginning of Canada's fur trade history.

Nanuk's location is in an area of diverse and abundant wildlife and daily excursions may have you photographing polar bears, black bears, wolves, moose or one of many migratory birds that frequent the area.

Package includes return airfare from Winnipeg to Churchill and Nanuk Polar Bear Lodge, two nights in Winnipeg and four nights at the lodge. All meals, excursions, and guide services while in Churchill and at the Lodge.



August - September



Length: 7 days, 6 nights



Price: \$12,595 CAD pp + tax



SUMMER DUAL LODGE SAFARI

Seal River Heritage Lodge & Nanuk Polar Bear Lodge



SUMMER DUAL LODGE SAFARI

Two lodges, two times the wildlife encounters! Immerse yourself in the beauty and diversity of the western Hudson Bay with our Summer Dual Lodge Safari. This one-of-a-kind safari includes four nights at Seal River Heritage Lodge for time with belugas and your first access to polar bears and finishes with four nights at Nanuk Polar Bear Lodge.

The summer months are a beautiful time on the Canadian tundra and traveling to two of our remote wilderness lodges will help you develop an appreciation for the distinctly unique terrain along the coastline. This incredible adventure will give you access to all that this diverse ecosystem has to offer which includes polar bears, black bears, beluga whales, wolves, moose, and a host of other wildlife.

Watch a polar bear wander through a field of a grass or go for a dip in the Hudson Bay! Stand beneath the Arctic sky and await the northern lights! This trip will be full of surreal and extraordinary experiences sure to stay with you long after you leave.

Package includes return airfare from Winnipeg to Churchill and the lodges, two nights in Winnipeg and eight nights at the lodges. All meals, excursions, and guide services while in Churchill and at the Lodge.



August - September



Length: 11 days, 10 nights



Price: \$19,995 CAD pp + tax



ARCTIC SAFARI

Seal River Heritage Lodge & Tundra Camp



ARCTIC SAFARI

Our Arctic Safari covers 20,000 km² of northern terrain and is filled with endless photo opportunities and exclusive experiences. Enjoy Seal River Heritage Lodge and expedition camping at our cozy Tundra Camp as we pamper you with world class service, guides, accommodations, and cuisine—truly the adventure of a lifetime.

Our National Geographic Creative photographer, Jad, will help you capture the incredible beauty and diversity of this wild Arctic region. The remoteness and logistical considerations of this safari make it an experience that only a handful of guests have the chance to partake in each year.

Your days will be focused on wildlife encounters and interpretive hikes across the rugged and colourful tundra terrain. In addition to the famed polar bear, keep your eyes open for wolves, Arctic fox, sik-siks, Arctic hare and hopefully northern lights!

Package includes return airfare from Winnipeg to Churchill and Seal River Heritage Lodge, two nights in Winnipeg, two nights at tundra camp, four nights at the lodge. All meals, excursions, and guide services while in Churchill and at the lodge.



September



Length: 9 days, 8 nights



Price: \$16,295 CAD pp + tax



FALL DUAL LODGE SAFARI

Seal River Heritage Lodge & Nanuk Polar Bear Lodge



FALL DUAL LODGE SAFARI

On the Fall Dual Lodge Safari you'll have access to two populations of polar bears, wolves, moose, and more, as well as opportunities for spectacular northern lights photography.

You'll traverse more than 300 km of the rugged Hudson Bay coast during your adventure and spend eight nights total at two of our rustic luxurious ecolodges. Seal River Heritage Lodge and Nanuk Polar Bear Lodge are located on vastly different landscapes giving you a comprehensive education of the Hudson Bay ecosystem. You could find yourself in fall colours, or with snow on the ground, or somewhere in between.

Explore the area on foot or hop on one of our custom-built Tundra Rhinos for a different perspective. After a long day of trekking the tundra, relax by the fire and enjoy informative evening presentations on the local wildlife and culture from your naturalist guides. Fuel your adventure with tundra-inspired cuisine complete with wine pairings and mouth-watering desserts.

The photography opportunities in the Canadian Arctic are endless and this program is great for amateur and aspiring photographers. The diversity of the wildlife and stunning landscapes are sure to take your breath away.

Package includes return airfare from Winnipeg to Churchill and the lodges, two nights in Winnipeg and eight nights at the lodges. All meals, excursions, and guide services while in Churchill and at the Lodge.

*The winter gear we provide is designed to fit guests from child to adult. Boot sizes larger than a men's size 13 or a very small child are customized sizes that we do not provide. Additionally, guests over 6'4" may be required to bring their own gear as we may not have clothing sizes to fit.



October



Length: 11 days, 10 nights



Price: \$20,995 CAD pp + tax



POLAR BEAR PHOTO SAFARI

Seal River Heritage Lodge



POLAR BEAR PHOTO SAFARI

Seal River Heritage Lodge

For nature loving photographers, this trip has it all: aerial tours, iconic northern wildlife, ample ground-level photography opportunities and phenomenal lighting.

There is something about the Arctic backdrop that brings photographers back time and again, dazzled by the experience of capturing polar bears on the snow during the day and shooting the transfixing northern lights at night.

Seal River Lodge is perched on an outcrop overlooking Hudson Bay and the sea ice formations seen here make for spectacular photo opportunities—with or without wildlife. Even though you'll be in polar bear country, a myriad of other Arctic animals such as Arctic fox and Arctic hare are on full display against this stunning backdrop. Like the famous tundra-inspired meals we serve, our Polar Bear Photo Safari has all the ingredients to make a lasting impression.

Package includes return airfare from Winnipeg to Churchill and Seal River Lodge, two nights in Winnipeg and four nights at the lodge. All meals, excursions, and guide services while in Churchill and at the Lodge.

*The winter gear we provide is designed to fit guests from child to adult. Boot sizes larger than a men's size 13 or a very small child are customized sizes that we do not provide. Additionally, guests over 6'4" may be required to bring their own gear as we may not have clothing sizes to fit.



October - November



Length: 7 days, 6 nights



Price: \$14,395 CAD pp + tax



POLAR BEAR PHOTO SAFARI

Nanuk Polar Bear Lodge



POLAR BEAR PHOTO SAFARI

Nanuk Polar Bear Lodge

Following a similar itinerary as our Photo Safari at Seal River Lodge, this trip takes place along the southern shores of Hudson Bay and has many of the same elements: aerial tours, iconic northern wildlife, ample ground-level photography opportunities and phenomenal lighting.

Nanuk Lodge is on the edge of the boreal forest and offers a different breathtaking vista each time you look up. Even though you'll be in polar bear country, a myriad of other Arctic animals such as wolves, moose, and Arctic fox guest star on this safari. Like the famous tundra-inspired meals we serve, our Polar Bear Photo Safari has all the ingredients to make a lasting impression.


The frosty, snow-covered trees and willows create a beautiful backdrop for photography and the remoteness of this property inspire a deep connection to nature. Daytime wildlife encounters and the chance for aurora photography make this trip a favourite for photographers.

Both packages include return airfare from Winnipeg to Churchill and Nanuk Polar Bear Lodge. All meals, excursions, and guide services while in Churchill and at the Lodge.

*The winter gear we provide is designed to fit guests from child to adult. Boot sizes larger than a men's size 13 or a very small child are customized sizes that we do not provide. Additionally, guests over 6'4" may be required to bring their own gear as we may not have clothing sizes to fit.

 October - November


 Length: 7 days, 6 nights

 Price: \$14,395 CAD pp + tax

This package includes two nights in Winnipeg and four nights at the lodge.

 October - November

 Length: 8 days, 7 nights

 Price: \$15,795 CAD pp + tax

This package includes two nights in Winnipeg and five nights at the lodge.



GREAT ICE BEAR

Dymond Lake Ecolodge



GREAT ICE BEAR

The traditional polar bear season encompasses the months of October and November. During this time, the polar bears congregate on the coast in large numbers while waiting for the Hudson Bay to freeze. This allows them passage onto the Bay where they will feast on seals until the spring. Our Great Ice Bear Adventure takes place during this period of abundance.

Churchill Wild's mandate is to introduce people to the wonders of the Arctic with minimal environmental impact so the exploration of the coastline will be done almost entirely on foot. The animals appreciate this! Churchill is your starting point - home to less than 900 people but during bear season the population explodes. You'll be one of the few to escape those crowds with your journey to Dymond Lake Ecolodge.

You will fly 30 km north of Churchill to this exclusive polar bear lodge along the Hudson Bay coastline. Our remote location allows for a much wider range of wildlife viewing than would be possible in the town-based tours. Beyond the majestic ice bears, you may also see wolves, moose, Arctic foxes, ptarmigans (a furry-footed grouse), and snowy owls, to name a few. After your time at the Lodge you will be transferred back to Churchill to for a private Tundra Buggy® tour where you'll enjoy more time with the beautiful white bears.

Package includes return airfare from Winnipeg to Churchill and Dymond Lake Lodge, two nights in Winnipeg, three nights at the lodge and one night in Churchill. All meals, excursions, and guide services while in Churchill and at the Lodge.

*The winter gear we provide is designed to fit guests from child to adult. Boot sizes larger than a men's size 13 or a very small child are customized sizes that we do not provide. Additionally, guests over 6'4" may be required to bring their own gear as we may not have clothing sizes to fit.



October - November



Length: 7 days, 6 nights



Price: \$13,695 CAD pp + tax



CLOUD WOLVES OF THE KASKA COAST

Nanuk Polar Bear Lodge



CLOUD WOLVES OF THE KASKA COAST

Answer the call of the wild wolves on our newest program and discover the thrill of tracking, watching, photographing, and studying these enigmatic creatures.

Whether you're a wolf lover dreaming of seeing and hearing them in the wild, a photographer chasing National Geographic-worthy images, or a naturalist craving field experience—or all three!—our nine-day cloud wolves expedition will take you on an unforgettable journey.

Our base is the beautiful Nanuk Polar Bear Lodge in the heart of the Kaska Coast of southern Hudson Bay, an uninhabited wilderness ten times the size of Yellowstone National Park. Far from civilization and never hunted, the resident packs of cloud wolves (*Canis lupus nubilus*) have no fear of humans, making for encounters and photography unrivalled anywhere else in the world.

Package includes return airfare from Winnipeg to Churchill and Nanuk Polar Bear Lodge, two nights in Winnipeg and six nights at the lodge. All meals, excursions, and guide services while in Churchill and at the Lodge.

*The winter gear we provide is designed to fit guests from child to adult. Boot sizes larger than a men's size 13 or a very small child are customized sizes that we do not provide. Additionally, guests over 6'4" may be required to bring their own gear as we may not have clothing sizes to fit.



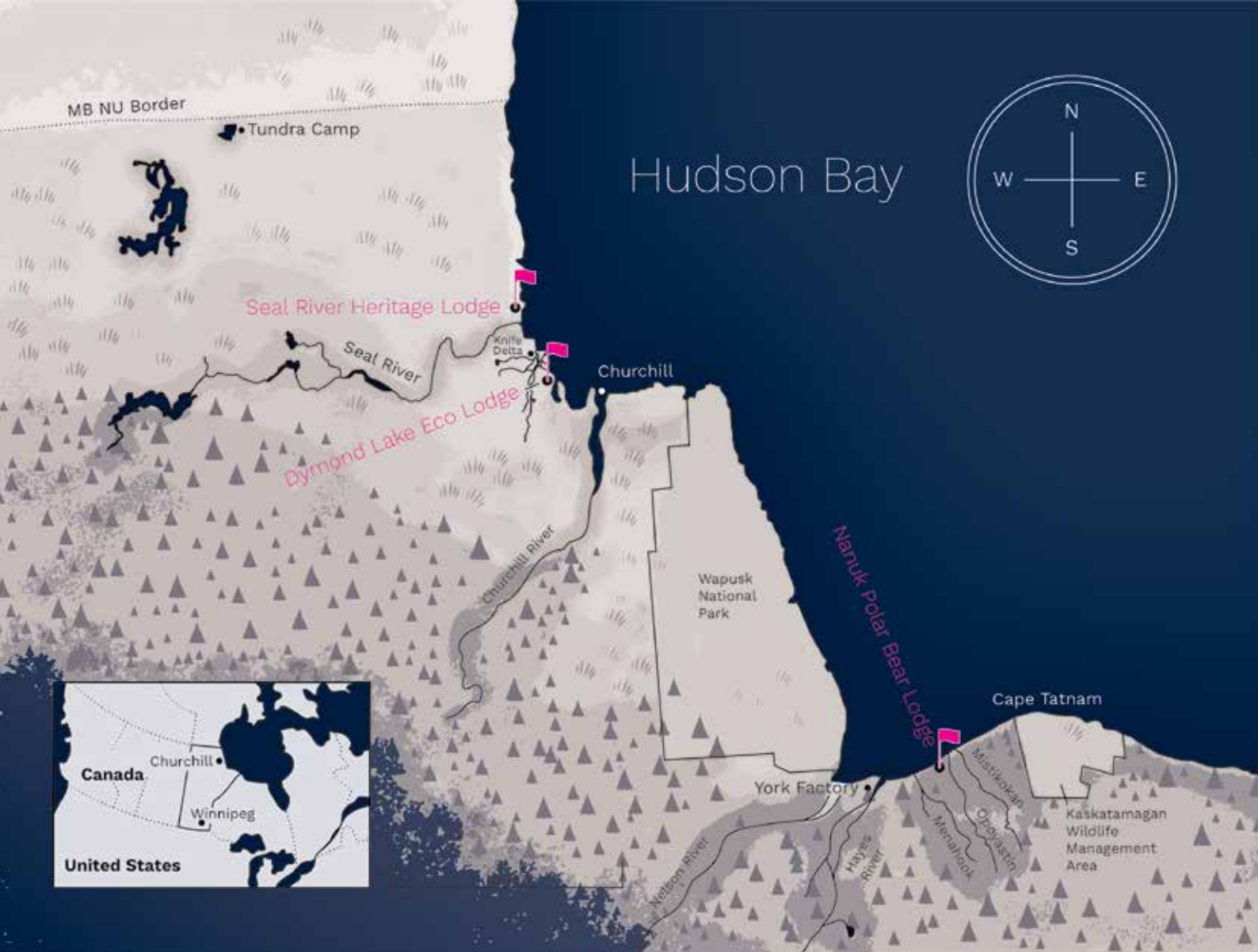
March & November



Length: 10 days, 9 nights



Price: \$19,995 CAD pp + tax



CHURCHILL WILD

THE WORLD'S NEXT GREAT SAFARI™

churchillwild.com • info@churchillwild.com

 NATIONAL
GEOGRAPHIC
UNIQUE LODGES
OF THE WORLD™




MAGNIFICENT
LUXURY WILDERNESS LODGES OF CANADA